

AGRISH Toilet Safety Frame

Instruction Manual



AG-ZLB12009-W

Email:

Agrish.us@outlook.com

Note:

Please read the instructions carefully before use.

01 PART LIST



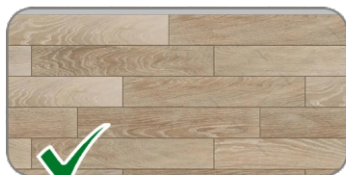
How to Setup Agrish Toilet Safety Rails

https://www.youtube.com/watch?v=TK_IKuj8Dok

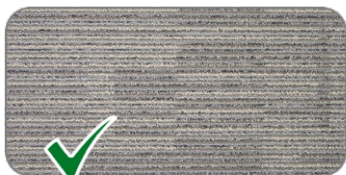
Which Foot Is Good For Your Floor?



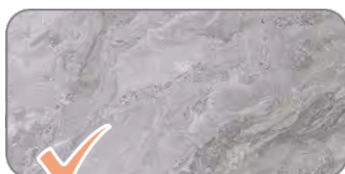
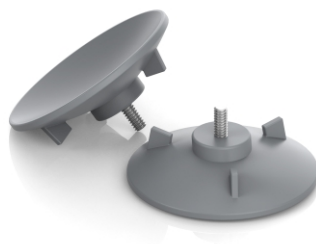
Texture



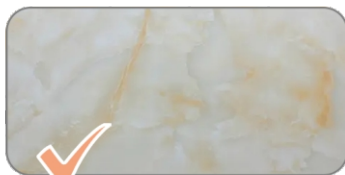
Wood floor



Vinyl flooring



Smooth floors




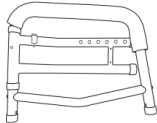



With no texture



Grout



* It is recommended to use (#F) Rubber Stopper if your floor had texture/wood floor/vinyl flooring.

Part Number	Diagram	Description	Qty
#A		Left Frame	1
#B		Right Frame	1
#C + #D		Middle Support + Adjustable Leg	4
#E		Suction Cup/Feet	4
#F		Rubber Stopper	4
#G		Fixed Clip	2

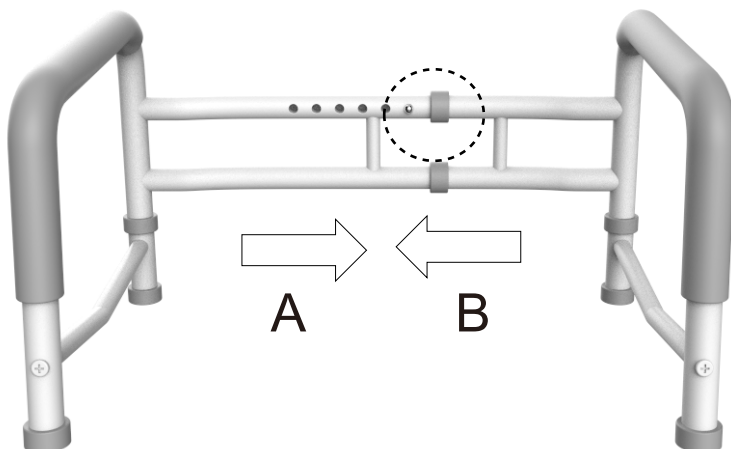


* Please NOTE that tubes #C and #D are pre-assembled in ONE tube.

02 HOW TO INSTALL?

NOTE: to adjust the width, simply compress the brass-colored button and adjust as required.

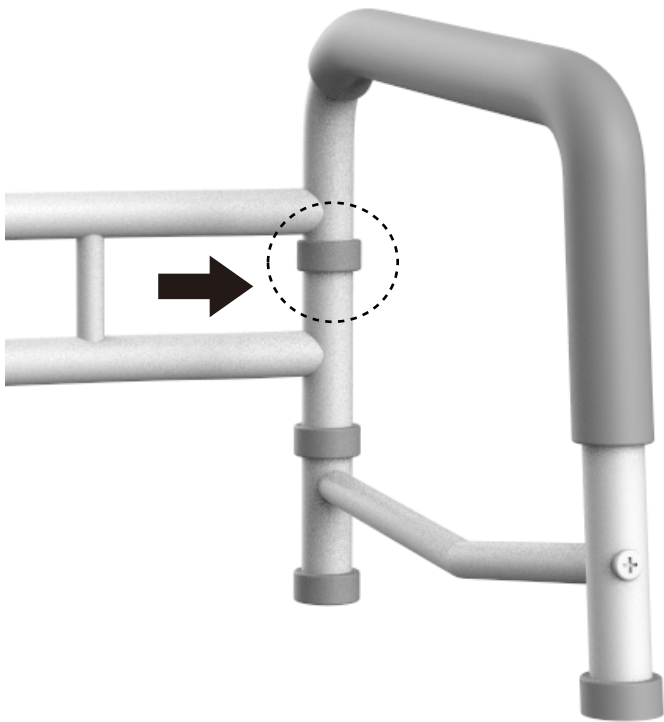
1. Insert side (A) of the back bar into side (B) by compressing the silver button while pushing the two sides together.



SUGGESTION: Keep the foam tube packaging and use it on the back rail to keep the metal from potentially scratching the porcelain, that will helpfully prevent back discomfort as well.

2. Clip the locking pins (G) into the holes on the armrest and make sure they are properly pushed in.

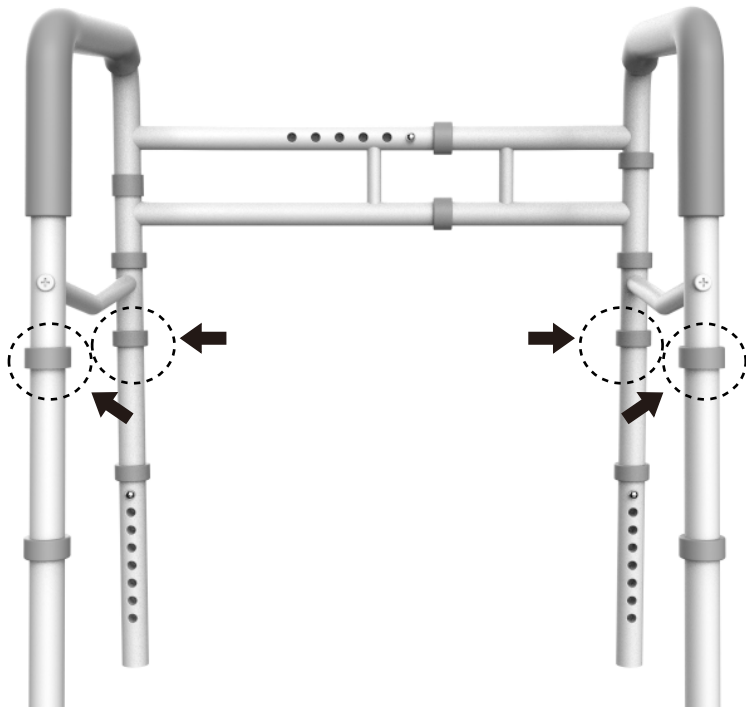
NOTE: The pins are designed to lock the armrests into position. Take them out when you are going to fold it to stock or carry it to travel.



3. Hold the lower leg (D) while pulling the upper leg (C) until you hear a click, with two silver buttons visible and locked in place.

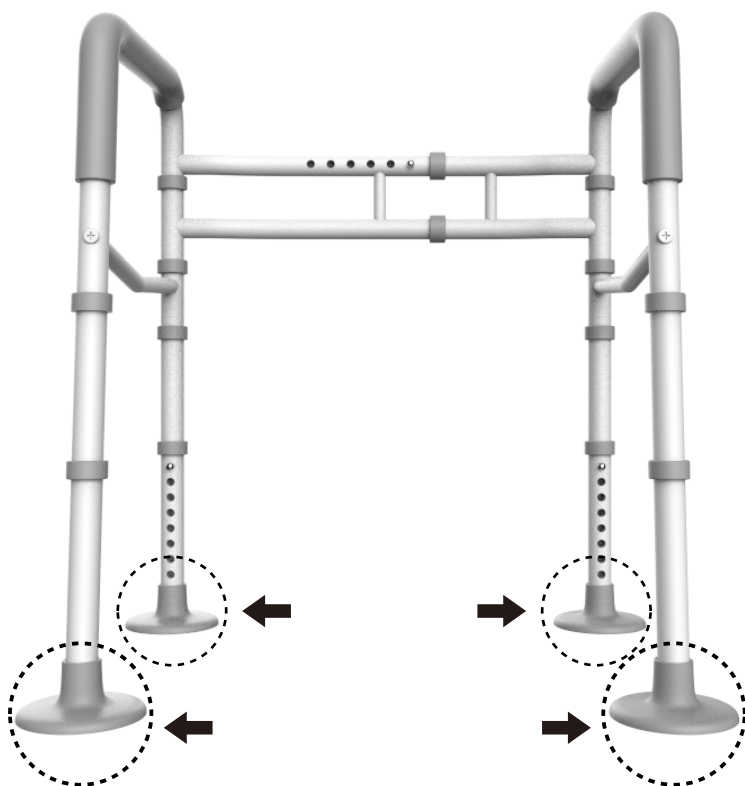
Insert upper leg (C) into the frame (A/B) by compressing the silver button and locking it into place.

NOTE: to adjust the height, simply compress the brass button that is locked into the lower legs (D) and adjust as required.



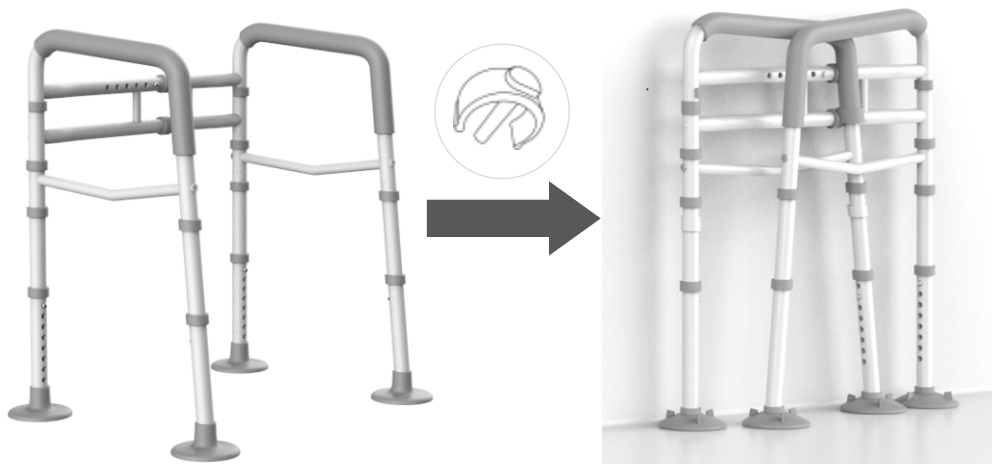
4. Screw the rubber suction cups (E) onto the four legs.
Or slide the rubber stoppers (F) onto the four legs.

NOTE: Make sure the floor and the base of the suction cups are clean before firmly pressing the suction cups in place.



03 HOW TO FOLD?

Take out two Fixed Clips (G), and then easy to fold it up.



IMPORTANT

It's normal for suction on cups to loosen over time. Please check them from time to time and re-establish the suction on if it has become weak.

To release the suction on cups (E), hold and gently pull the tags. Do not try and release it from the floor by pulling the unit as this could cause damage.

Setting the front legs 1–2 settings longer than the back legs gives you the best stability.

Trouble Shooting

Question:

Where the different legs should be placed?

Answer:

1. Floor had a texture that didn't allow the suction to happen.
2. Suction cups don't work on wood floors.
3. The suction cups can't grip vinyl flooring.
4. Suggest to use normal rubber stoppers (F) if the suction cups don't work for your floor.

Cleaning/Maintenance

Wipe the entire chair with a neutral detergent, then wipe with clean water, and then dry it in a ventilated place.

Prevention and warning

1. The product should not be left outside on rainy days.
2. Before sitting down, make sure all these buckles are locked in the correct position.
3. Do not hang heavy objects on either side of the armrest, otherwise the commode chair will become unstable.

180-DAY Warranty

AGRISH is warranted to be free of defects in materials and workmanship. This device was built to exacting standards and carefully inspected prior to shipment. This Warranty is an expression of our confidence in the materials and workmanship of our products and our assurance to the consumer of dependable service.

In the event of a defect covered by this warranty, we will, at our option, repair or replace the device. This warranty does not cover device failure due to owner misuse or negligence, or normal wear and tear.

The warranty does not extend to non-durable components, such as rubber accessories, casters, and grips, which are subject to normal wear and need periodic replacement.

If you have a question about this toilet device or this warranty, please contact us.

MORE AGRISH PRODUCTS FOR YOUR NEEDS



**Bed Rails
with Legs**

**Bedside
Assist Bars**

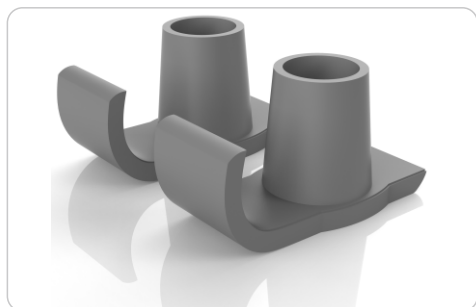


**Toilet
Safety Rails**



Rised
Toilet Seat

3-IN-1
Bedside
Commode



Walker
Ski Glides



Welcome to Agrish Store:

<https://www.amazon.com/stores/AgrishHealth/page/26E5C6BF-9D4B-4CA4-8C89-6E478C089448>

AGRISH, A great wish you go well. :)

Thank you for your Agrish Products purchase!

We hope you love it as much as we loved making it.

Please leave us a comment and let us know how we did.



Scan QR code to share your shipping experience.

**180-DAY
Manufacturer's
Warranty in Canada & US**

Customer Service & Support
Agrish.us@outlook.com



SAVE THE PLANET!



Returns generate more than 15 million tons of CO₂, actually.



If pieces are missing or have arrived damaged, before return, contact us, please.



Agrish.us@outlook.com